



**PATERSON
GROUP**

SOLUTION ORIENTED ENGINEERING

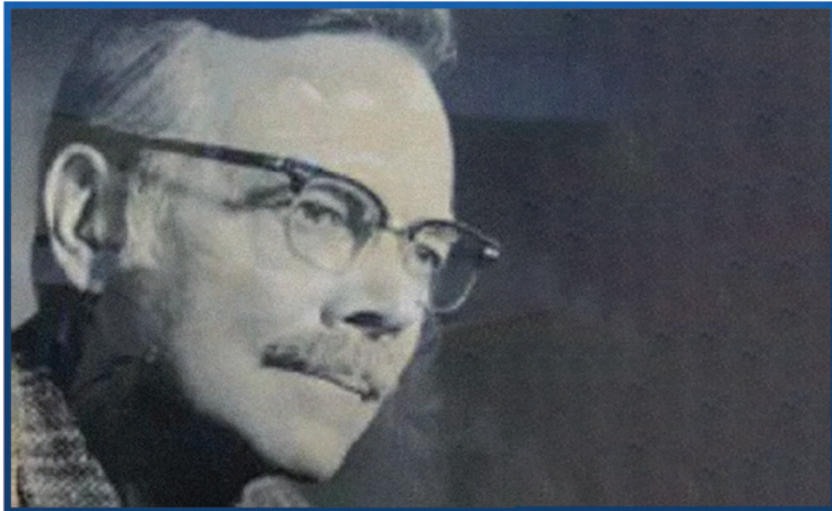
PATERSONGROUP.CA

1956 -1959

IN 1956, JOHN (JACK) D. PATERSON, P.ENG. AND GEOLOGIST, ESTABLISHED A PROPRIETORSHIP TO PROVIDE CONSULTING ENGINEERING SERVICES TO THE GREATER OTTAWA AREA IN GEOLOGY AND IN THE GROWING DISCIPLINE OF GEOTECHNICS. ANTICIPATING THAT THERE WOULD BE A NEED FOR SUCH SERVICES LOCALLY WAS PROPHETIC, AND BUSINESS WAS BRISK AND STEADY. IN RESPONSE TO THE DEMAND, SERVICES WERE EXPANDED SOLELY FROM SUBSURFACE INVESTIGATIONS INTO THE ASSOCIATED BROAD CATEGORIES OF FOUNDATION FAILURES, PAVEMENT STRUCTURES, PROPERTY EVALUATIONS AND MATERIALS TESTING.

1959 -1983

THE PERIOD FROM 1959 TO 1962 SAW THE INAUGURATION OF A BUILDING BOOM IN OTTAWA AND THE REVITALIZATION OF THE DOWNTOWN CORE. IT WAS A PERIOD OF RAPID CHANGE AND EXPANSION BOTH FOR THE CONSTRUCTION INDUSTRY AND THE COMPANY. A MATERIALS TESTING LABORATORY WAS SET UP TO TEST SOILS, CONCRETE AND ASPHALT. FROM 1962 TO 1983, TO ACCOMMODATE EXPANSION, OFFICES AND A SEPARATE LABORATORY WERE MOVED TO NEW PREMISES. FOLLOWING THE INCORPORATION OF THE COMPANY IN 1964, THE BUILDING SCIENCE DIVISION WAS FORMED TO DEAL WITH ROOFING AND WATERPROOFING ISSUES. TEMPORARY SATELLITE LABORATORIES WERE ESTABLISHED IN SMITHS FALLS AND KINGSTON, ONTARIO.



1983 -1990

IN 1983, JACK PATERSON RETIRED WHILE THE COMPANY CONTINUED ITS EXPANSION WITH A FURTHER HOUSING BOOM IN THE OTTAWA AREA. THE PHYSICAL EXPANSION OF THE COMPANY ALLOWED FOR THE MOVE TO ITS PRESENT LOCATION IN OTTAWA.

1990 -2021

ALTHOUGH ENVIRONMENTAL ENGINEERING HAD BEEN CARRIED OUT BY THE FIRM FOR SEVERAL YEARS, IN 1990, THE ENVIRONMENTAL DIVISION WAS OFFICIALLY FORMED TO UNDERTAKE A VARIETY OF ASSIGNMENTS ASSOCIATED WITH GROWING ENVIRONMENTAL CONCERNS. FROM ITS INCEPTION IN 1990, THIS DIVISION HAS GROWN TO BECOME A SIGNIFICANT PART OF THE COMPANY. PATERSON GROUP HAS ESTABLISHED ITSELF AS A LEADER IN ENVIRONMENTAL ISSUES WITH RESPECT TO REAL ESTATE TRANSACTIONS. IN 1998, AN OFFICE AND LABORATORY WAS OPENED IN NORTH BAY TO SERVE OUR NORTHERN CLIENTS. IN 2012, PATERSON GROUP'S HEAD OFFICE WAS MOVED TO A NEW LOCATION AT 154 COLONNADE ROAD SOUTH TO ACCOMMODATE OUR GROWING BUSINESS AND TO BETTER SERVE OUR CORE CLIENTS.

2021 - PRESENT

IN 2021, PATERSON GROUP WAS RESTRUCTURED WITH DAVID GILBERT TAKING ON THE ROLE OF PRESIDENT, AND MARK D'ARCY, BRAD RICHARDSON, JOE FORSYTH, STEVE MARIASINE, CURTIS BEADOW, MIKE LAFLAMME AND MIKE KILLAM MAKING UP THE NEW TEAM OF LEADERSHIP. BUT EVEN WITH A TEAM THAT HAS GROWN TO 160 PEOPLE STRONG, THIS NEW GROUP IS AS COMMITTED AS THE GENERATION BEFORE TO INNOVATION.

IN SPRING 2022, PATERSON GROUP MOVED INTO A NEW OFFICE AT 9 AURIGA DRIVE, AND WITH THAT, CAME A NEW BRAND IDENTITY AND NEW WEBSITE. ALL OF THIS IS A PART OF AN OVERDUE REFRESH AND AN EFFORT BY THE NEW MANAGEMENT TEAM TO MAKE ITS STAMP ON THE SOON-TO-BE-70-YEAR-OLD BUSINESS.

IN 2023, PATERSON GROUP OFFICIALLY OPENED THEIR GTA OFFICE AT 1535 MEYERSIDE DRIVE, MISSISSAUGA, BEGINNING A NEW JOURNEY AND EXPANDING THEIR SERVICES TO THE GREATER TORONTO COMMUNITY.

GEOTECHNICAL

PATERSON GROUP'S TEAM OF EXPERIENCED ENGINEERS AND TECHNICIANS CAN PROVIDE GEOTECHNICAL DESIGN AND REVIEW SERVICES FOR RESIDENTIAL AND COMMERCIAL DEVELOPMENT APPLICATIONS IN ACCORDANCE WITH PROVINCIAL AND MUNICIPAL GUIDELINES.

- GEOTECHNICAL INVESTIGATIONS FOR FUTURE DEVELOPMENTS
- GEOTECHNICAL INVESTIGATIONS FOR EXISTING INFRASTRUCTURE
- BEDROCK STABILIZATION DESIGN
- FOUNDATION DRAINAGE AND WATERPROOFING DESIGN
- RETAINING WALL DESIGN
- SLOPE STABILITY ANALYSIS
- SEISMIC SHEAR WAVE VELOCITY TESTING AND ANALYSIS
- TREE AND FOUNDATION DAMAGE INVESTIGATIONS
- ROCK ANCHOR DESIGN
- FROST PROTECTION DESIGN
- SPECIAL INSTRUMENTATION MONITORING
- PROXIMITY STUDIES
- DESIGN FOR CONSTRUCTION OVER SENSITIVE MARINE CLAYS
- SOILS TESTING FOR TREE PLANTING SETBACK RECOMMENDATIONS
- SETTLEMENT MONITORING PROGRAMS
- PERMISSIBLE GRADE RAISE RECOMMENDATIONS
- INCLINOMETER TESTING
- PILE DRIVING ANALYZER (PDA) TESTING
- CRACK MONITORING
- TEMPORARY SHORING DESIGN & EXCAVATION SUPPORT SYSTEM DESIGN
- PULL TESTING

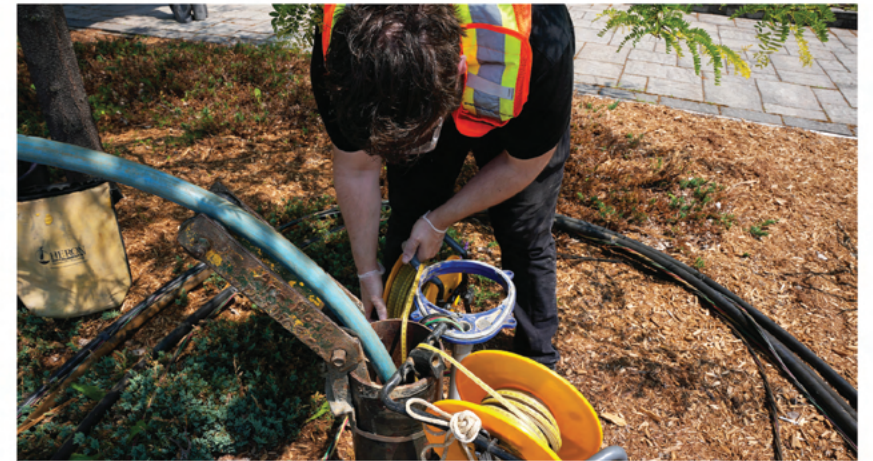




HYDROGEOLOGICAL

PATERSON GROUP'S TEAM OF EXPERIENCED HYDROGEOLOGISTS AND TECHNICIANS CAN PROVIDE STUDIES AND INVESTIGATIONS RELATED TO GROUNDWATER ASSOCIATED WITH DEVELOPMENT OF RESIDENTIAL, COMMERCIAL, AND INDUSTRIAL PROPERTIES.

- MUNICIPAL SEWER DISCHARGE PERMIT APPLICATIONS
- GROUNDWATER IMPACT ASSESSMENTS
- PERMEAMETER TESTING
- WATER WELL SURVEYS
- CONSTRUCTION DEWATERING
- WATER BUDGET ASSESSMENTS
- GROUNDWATER MOUNDING ANALYSIS
- QUARRY APPLICATIONS – NEW OR EXPANSION
- HYDROGEOLOGICAL REPORT AND TERRAIN ANALYSIS STUDIES
- LARGE ON-SITE WASTEWATER TREATMENT SYSTEM DESIGNS





RURAL DEVELOPMENT DESIGN

PATERSON GROUP'S TEAM OF DEDICATED ENGINEERS AND TECHNICIANS PROVIDE PRIVATE SEWAGE AND INDUSTRIAL SYSTEM DESIGN, MONITORING, AND ANALYSIS OF RESIDENTIAL OR COMMERCIAL DRINKING WELLS.

- HYDROGEOLOGICAL SUPPORT FOR SITE PLAN, RE-ZONING APPLICATIONS, LOT SEVERANCE AND SUBDIVISIONS.
- SEWAGE SYSTEM DESIGN (OBC AND MECP)
- HYDROGEOLOGICAL ASSESSMENT / TERRAIN ANALYSIS
- RURAL SUBDIVISION APPLICATION
- MINERAL RESOURCE IMPACT ASSESSMENT
- LOW IMPACT DEVELOPMENT – PERMEAMETER TESTING AND GROUNDWATER ELEVATION MONITORING IN SUPPORT OF STORMWATER MANAGEMENT DESIGN.





MATERIALS TESTING & LABORATORY

PATERSON GROUP'S MATERIALS TESTING DIVISION INCLUDES A STATE-OF-THE-ART CCIL CERTIFIED LABORATORY AND A LARGE STAFF OF FIELD INSPECTORS, TECHNICAL MANAGERS, AND ENGINEERS TO PROVIDE CONSTRUCTION INSPECTION SERVICES FOR VARIOUS PROJECTS IN THE PRIVATE SECTOR SUCH AS LOW AND HIGH-RISE DEVELOPMENTS, AS WELL AS IN THE PUBLIC SECTOR FOR MUNICIPAL, PROVINCIAL, AND FEDERAL PROJECTS.

- ▣ BEARING MEDIUM EVALUATIONS
- ▣ SUBGRADE INSPECTIONS
- ▣ COMPACTION TESTING (UNDERGROUND SERVICES, ROADWAYS, PARKING LOTS, UNDERSIDE OF FOOTING)
- ▣ FROST CHECKS
- ▣ END BEARING PILE FOUNDATION AND CAISSON INSTALLATION INSPECTIONS
- ▣ CONCRETE FIELD TESTING
- ▣ MORTAR AND GROUT TESTING
- ▣ ASPHALT FIELD TESTING
- ▣ SPECIALIZED CONCRETE FIELD TESTING
- ▣ FAILURE INVESTIGATIONS
- ▣ PAVEMENT ENGINEERING
- ▣ BRIDGE INSPECTIONS
- ▣ ON-SITE AND QUARRY AGGREGATE SAMPLING
- ▣ BACKFILL MONITORING
- ▣ HOMEOWNER SERVICES
- ▣ CONCRETE LABORATORY TESTING
- ▣ ASPHALT LABORATORY TESTING
- ▣ SOILS AND AGGREGATES LABORATORY TESTING





ENVIRONMENTAL

PATERSON GROUP HAS AN EXPERIENCED AND KNOWLEDGEABLE TEAM OF ENVIRONMENTAL SPECIALISTS THAT CAN PROVIDE A VARIETY OF ENVIRONMENTAL SERVICES FOR DEVELOPMENT APPLICATIONS AND STUDIES FOR DUE DILIGENCE PURPOSES. OUR ENVIRONMENTAL TEAM IS HERE TO ASSIST YOUR PROJECT FROM START TO FINISH, ENSURING THAT HIGH QUALITY WORK IS PREPARED IN COMPLIANCE WITH APPLICABLE REGULATIONS.

- PHASE I - ENVIRONMENTAL SITE ASSESSMENT (ESA)
- PHASE II - ENVIRONMENTAL SITE ASSESSMENT (ESA)
- RISK ASSESSMENTS
- REMEDIAL SUPERVISION
- EXCESS SOIL MANAGEMENT
- QPESA CONSULTATION
- RECORDS OF SITE CONDITION
- BROWNFIELD GRANT APPLICATIONS
- REMEDIAL ACTION PLANS
- DESIGNATED SUBSTANCE SURVEYS
- AIR QUALITY TESTING AND ANALYSIS
- SOIL AND GROUNDWATER MANAGEMENT PLANS
- EROSION AND SEDIMENT CONTROL PLANS
- SPILL CONTINGENCY AND POLLUTION PREVENTION PLANS
- ASBESTOS SURVEYS
- MOULD ASSESSMENTS
- RADON TESTING





NOISE & VIBRATION

PATERSON GROUP'S TEAM OF EXPERIENCED ENGINEERS AND TECHNICIANS CAN PROVIDE SERVICES FOR NOISE AND VIBRATION IN ACCORDANCE WITH MUNICIPAL BYLAWS, AS WELL AS SERVICES RELATED TO PRE-BLAST AND PRE-CONSTRUCTION SURVEYS.

- NOISE AND VIBRATION STUDIES
- VIBRATION MONITORING PROGRAMS
- NOISE FEASIBILITY STUDIES
- PRE-BLAST SURVEYS
- PRE-CONSTRUCTION BUILDING SURVEYS
- SOUND MONITORING





BUILDING SCIENCE

PATERSON GROUP IS WELL KNOWN FOR THEIR WORK IN BUILDING ENVELOPE AND STRUCTURAL ENGINEERING, IN RELATION TO THE ASSESSMENT OF EXISTING BUILDINGS, REHABILITATION OF EXTERIOR BUILDING ELEMENTS, OR DESIGN CONSULTATIONS AND INSPECTIONS FOR NEW BUILDINGS.

- REVIEW OF CONSTRUCTION MOCK-UPS
- QUALITY ASSURANCE INSPECTIONS DURING CONSTRUCTION
- IN-PROGRESS DESIGN & CONSTRUCTION CONSULTATIONS
- BUILDING CONDITION ASSESSMENTS
- RESERVE FUND STUDIES
- BUILDING ENVELOPE REVIEWS
- ROOF CONDITION ASSESSMENTS, INCLUDING THERMOGRAPHY
- 1ST YEAR PERFORMANCE AUDITS
- PERFORMANCE TESTING OF BUILDING ENVELOPE ELEMENTS
- WHOLE BUILDING AIR LEAKAGE TESTING
- THERMOGRAPHY
- WATER LEAK AND AIR LEAKAGE INVESTIGATIONS
- STRUCTURAL LOAD TESTING (GUARDS, ROOF ANCHORS, ETC)
- BALCONY AND GARAGE REHABILITATION
- STRUCTURAL RENOVATIONS
- STRUCTURAL ADEQUACY ASSESSMENTS
- REINFORCING STEEL INSPECTIONS
- STRUCTURAL INVESTIGATIONS AND REPAIRS
- ENGINEERING FOR EXTERIOR BUILDING REHABILITATION OF ALL TYPES, INCLUDING ASSESSMENTS, DESIGN, SPECIFICATIONS, TENDERING, SITE REVIEW & CONTRACT ADMINISTRATION
- CLADDINGS OF ALL TYPES (SIDING, STUCCO, MASONRY, EIFS), WINDOWS, DOORS, CURTAINWALLS, FLAT ROOFS, PITCHED ROOFS, SPECIALTY





ENERGY & SUSTAINABILITY

AT PATERSON GROUP, WE BELIEVE WE HAVE A RESPONSIBILITY TO POSITIVELY CONTRIBUTE TO SOCIETY AND THE PLANET, AND THAT EVERY BUILDING CAN BE IMPROVED. OUR TALENTED TEAM OF ENGINEERS AND TECHNOLOGISTS ARE COMMITTED TO HELPING OUR CLIENTS REDUCE RISK, IMPROVE QUALITY, AND CREATE LASTING VALUE IN THEIR PROJECTS AND PORTFOLIOS.

- DECARBONIZATION STUDIES AND PLANNING
- BUILDING CERTIFICATIONS
- ENERGY AND WATER AUDITS
- BUILDING ENVELOPE PERFORMANCE ASSESSMENTS
- ENERGY MODELLING FOR BUILDING ENVELOPE UPGRADES
- SUSTAINABLE DESIGN STRATEGY
- INNOVATIVE TECHNOLOGY EVALUATION
- BUILDING ENVELOPE DESIGN CONSULTATION
- SUSTAINABILITY REPORTING SERVICES
- UTILITY CONSUMPTION BENCHMARKING
- EMBODIED AND OPERATIONAL CARBON ACCOUNTING





OTTAWA OFFICE

9 AURIGA DRIVE
OTTAWA, ONTARIO K2E 7T9
613-226-7381

MATERIALS LAB

28 CONCOURSE GATE, UNIT 6
OTTAWA, ONTARIO K2E 7T7
613-226-7381

GTA OFFICE AND LAB

1535 MEYERSIDE DRIVE, UNIT 7/8
MISSISSAUGA, ONTARIO L5T 1M9
647-254-0500

NORTHERN OFFICE AND LAB

63 GIBSON STREET
NORTH BAY, ONTARIO P1B 8Z4
705-472-5331